



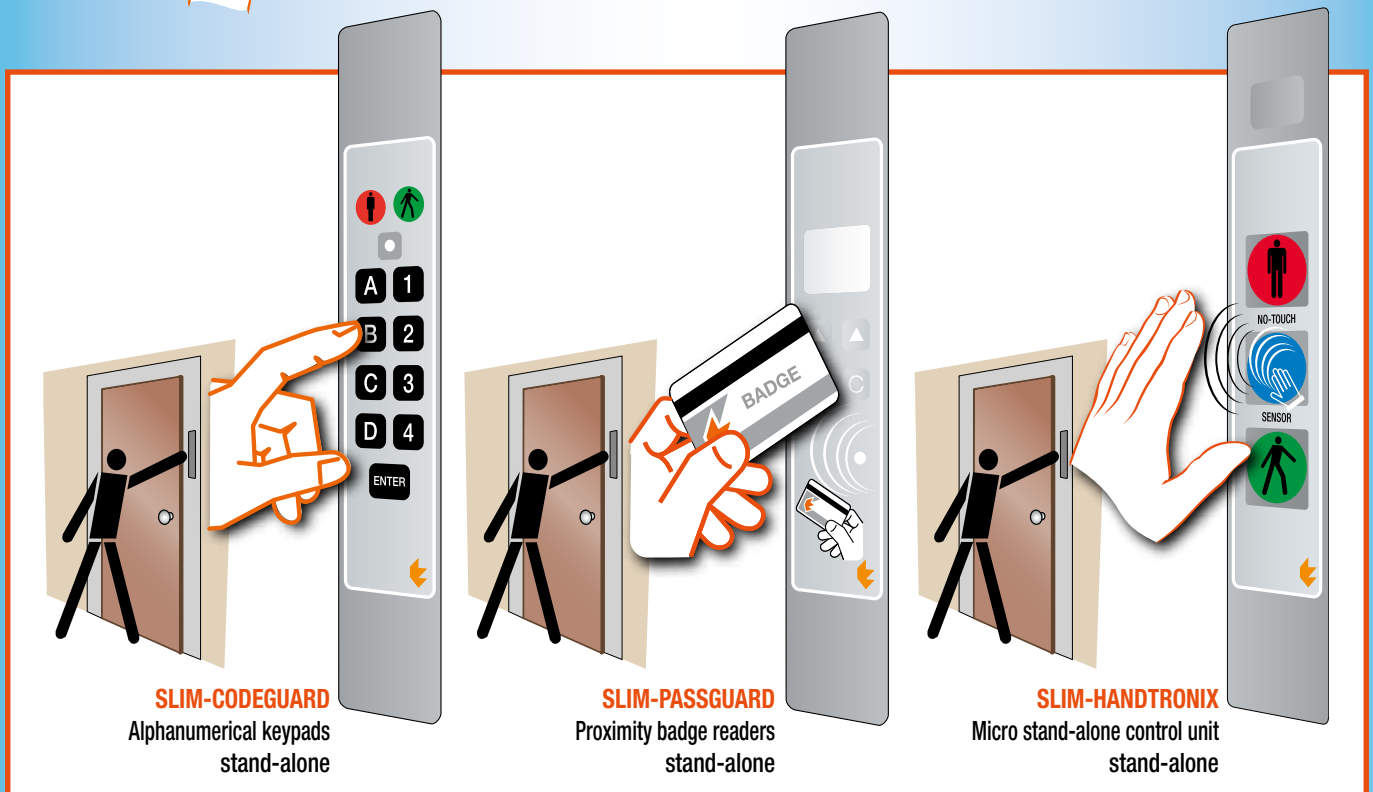
DOOR MANAGEMENT SYSTEMS

STAND-ALONE UNIT

Readers and numerical keypads for creating access control systems



3 devices with 5 different functions, in a single unified convertible module.



with 5 types of installation next to the door

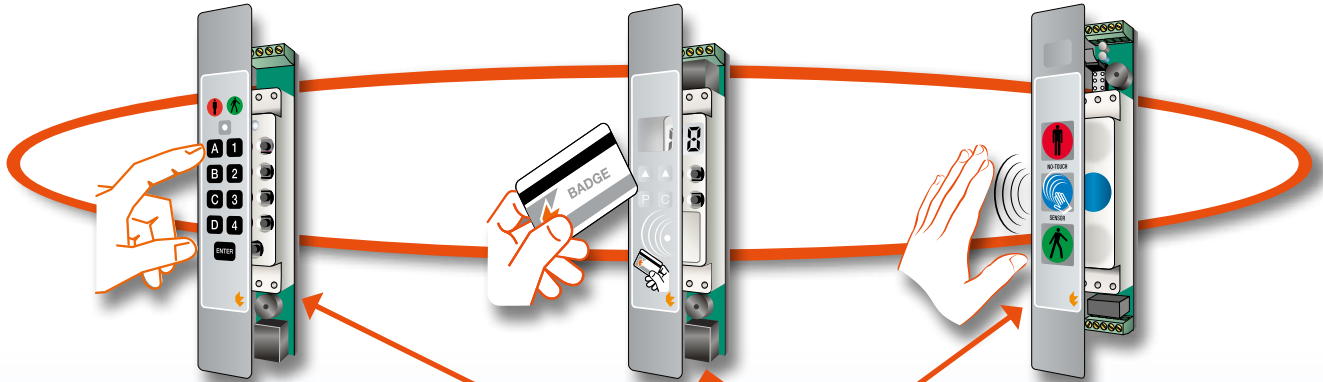
SLIM & MODULAR

Ultraslim and supercompact devices
in unified convertible format
in 5 installation types next to door.

Alphanumerical
keypads stand-alone
SLIM-CODEGUARD

Proximity badge
readers stand-alone
SLIM-PASSGUARD

Micro stand-alone
control unit stand-alone
SLIM-HANDTRONIX

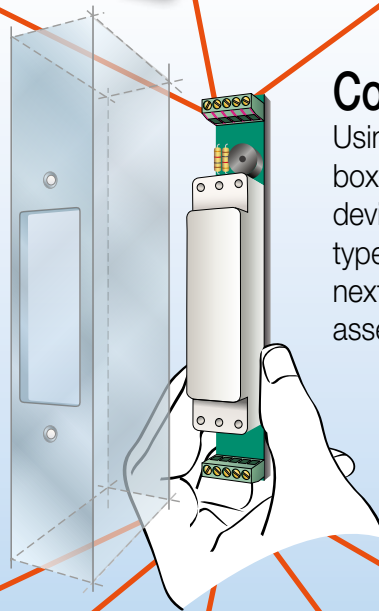


Unified module because....

A full SLIM & MODULAR range of devices with different functions, operations and purposes (code keypad, badge readers, micro stop and go display control panels, and stop and go display panels, entryphones and button panels on same series...) designed and made bearing in mind a single module of one size (Same for all). In fact, all the devices have the same appearance, size and modularity in order to be interchangeable and to be housed in the same unified chassing of the previous lock.

Convertible because...

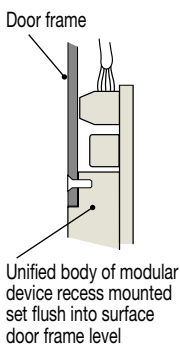
Using unified flanges, cases and boxes, any unified SLIM & MODULAR device is convertible into 5 different types that can be installed in any way, next to the door, based on the assembly needs found in the field.



Assembly type

1

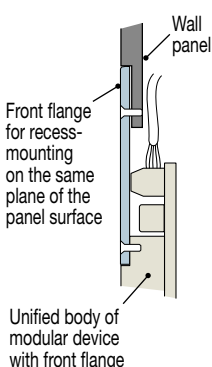
fully aligned concealed for recess-mounting without flange on the same plane of the door frame panel



Assembly type

2

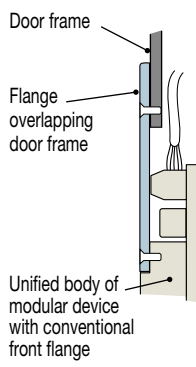
fully aligned at milling for recess-mounting with front flange on the same plane of the panel surface



Assembly type

3

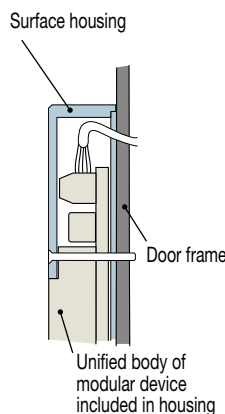
for conventional flush mounting with front flange overlapping door frame



Assembly type

4

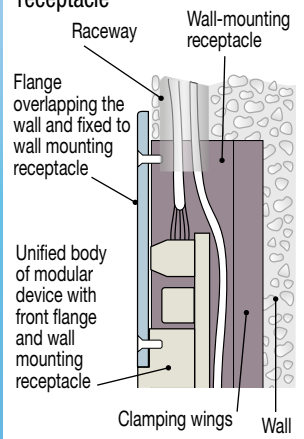
for surface mounting with using housing



Assembly type

5

for recessed wall-mounting with flange and wall-mounting receptacle



SLIM-CODEGUARD STAND-ALONE PROFESSIONAL CODE KEYPAD

Export Product-list

January 2024



TECNODIMENSIONE®

Ordering information

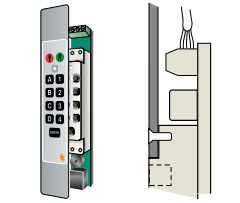
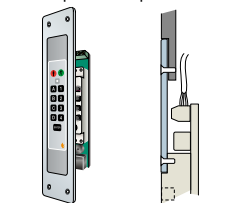
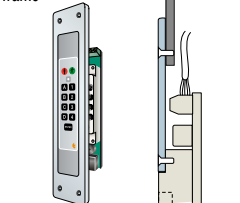
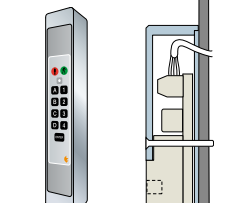
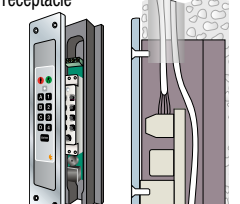


Q.ty

Models for 12 VDC power supply

MODELS

N°

<p>Assembly type 1 fully aligned concealed for recess-mounting without flange on the same plane of the door frame panel *</p> 	<p>SLIM-CODEGUARD access code keypad type 1 with fully aligned concealed for recess-mounting on the same plane of the door frame panel without flange. Ideal to achieve a "smooth" surface (without roughness) that is easy to clean. Supplied with diffuser screen and gap G for sections with a thickness of 1.6 mm. Complete with self-adhesive cover designed to be applied after the final installation of the system. * In this case it is advisable to prepare the recess during the door frame machining.</p> <p>Same with front panel and gap G for sections with a thickness of 3 mm.</p>	<p>034991NM2U</p>		
<p>Assembly type 2 fully aligned at milling for recess-mounting with front flange on the same plane of the panel surface ♦</p> 	<p>SLIM-CODEGUARD access code keypad type 2 for aligned recessed flush fitting in bottom of panel using front flange (e.g. To mount on wall panel next to the door frame on the post where no chasing can be carried out). Supplied with front flange in anodized aluminium with "silver" finish, 250 x 50 mm, thickness 2.5 mm for recess-mounting on the same plane of the panel surface for aligned recessed flush fitting in bottom of plane using front flange. Cover pre-assembled and fixed into the flange niche. ♦ In this case, it is advisable to prepare sunk milling during the panel machining phase.</p>	<p>034992NM2U</p>		
<p>Assembly type 3 for conventional flush mounting with front flange overlapping door frame</p> 	<p>SLIM-CODEGUARD access code keypad type 3 for traditional recessed fitting using flange. Supplied with front flange in anodized aluminium with "silver" finish - 250 x 50 mm, thickness 4 mm for flush mounting. Cover pre-assembled and fixed into the flange niche. Mounting can be carried out "on site", directly onto the installed door frame.</p>	<p>034993NM2U</p>		
<p>Assembly type 4 for surface mounting with using housing</p> 	<p>SLIM-CODEGUARD access code keypad type 4 for mounting placed on surface using housing. With extra-strong protective housing, made in anodized silver finish aluminium (35 x 25 x 215 mm). Self-adhesive cover in polycarbonate, provided separately and designed to be used as final cover to hide the 4 fixing screws of the housing on the door frame. Useful when you wish to avoid recess-mounting or cuts on the door frame.</p>	<p>034994NM2U</p>		
<p>Assembly type 5 for recessed wall-mounting with flange and wall-mounting receptacle</p> 	<p>SLIM-CODEGUARD access code keypad type 5 for recessed assembly using flange and wall box. Supplied with front flange in anodized aluminium with "silver" finish - 250 x 50 mm, thickness 4 mm, to be fixed to the housing by placing on wall surface. Self-adhesive cover in polycarbonate pre-assembled and fixed into the flange niche. Also fitted with wall box with "wings" for rapid anchoring (65 x 30 x 230 mm), in plastic taken from single block to be assembled "in a niche" in the wall to house the body of the access code keypad. Wall niche and cable channel to be prepared beforehand.</p>	<p>034995NM2U</p>		

Special configurations available at extra charge: Cover with your logo and/or customized.

For sizes, measurements and details of chasing, application examples and connection diagrams, see page 89

