



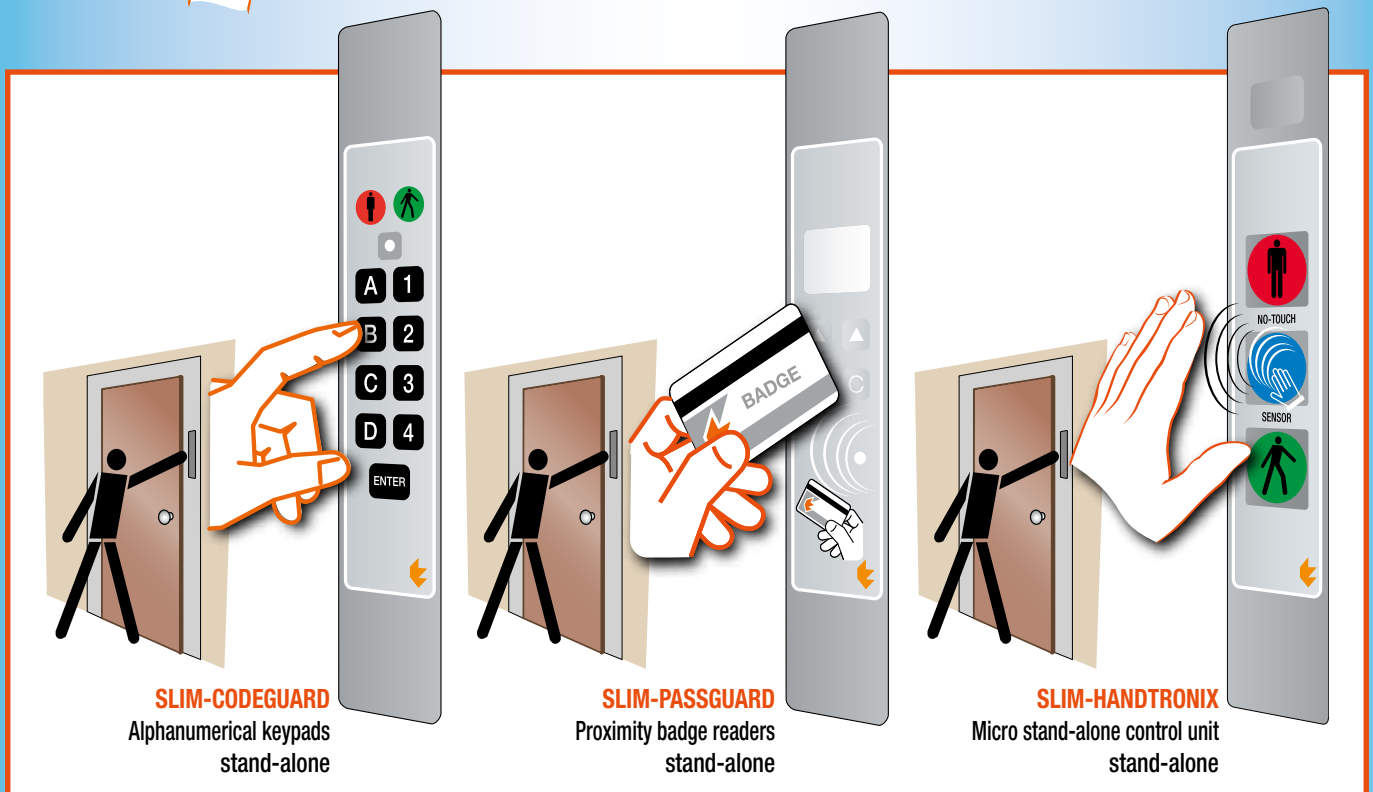
## DOOR MANAGEMENT SYSTEMS

### STAND-ALONE UNIT

Readers and numerical keypads for creating access control systems



3 devices with 5 different functions, in a single unified convertible module.



with 5 types of installation next to the door

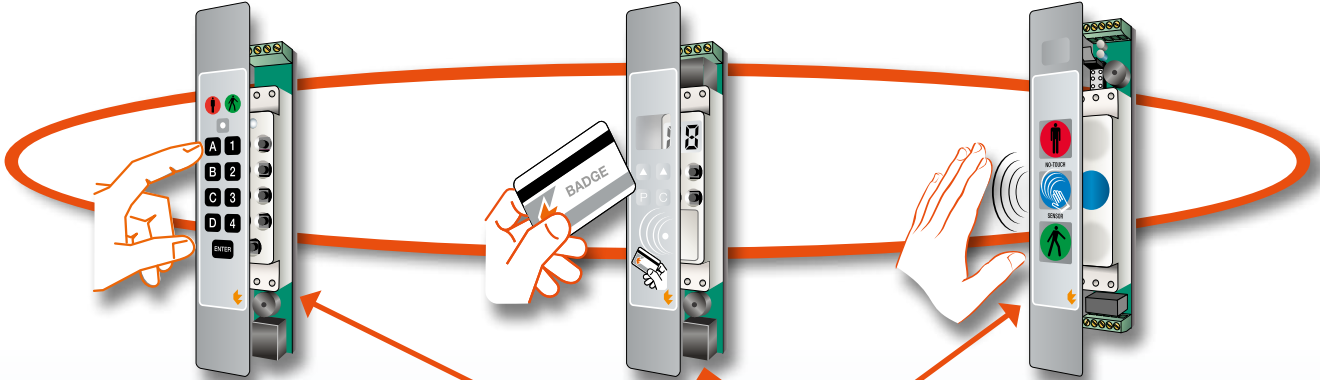
# SLIM & MODULAR

Ultraslim and supercompact devices  
in unified convertible format  
in 5 installation types next to door.

Alphanumerical  
keypads stand-alone  
**SLIM-CODEGUARD**

Proximity badge  
readers stand-alone  
**SLIM-PASSGUARD**

Micro stand-alone  
control unit stand-alone  
**SLIM-HANDTRONIX**

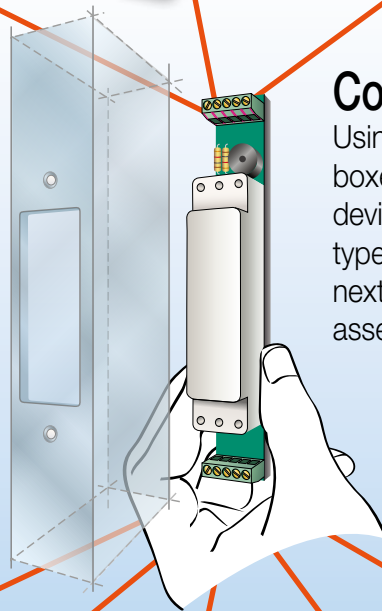


## Unified module because....

A full SLIM & MODULAR range of devices with different functions, operations and purposes (code keypad, badge readers, micro stop and go display control panels, and stop and go display panels, entryphones and button panels on same series...) designed and made bearing in mind a single module of one size (Same for all). In fact, all the devices have the same appearance, size and modularity in order to be interchangeable and to be housed in the same unified chassing of the previous lock.

## Convertible because...

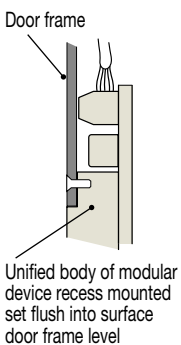
Using unified flanges, cases and boxes, any unified SLIM & MODULAR device is convertible into 5 different types that can be installed in any way, next to the door, based on the assembly needs found in the field.



### Assembly type

**1**

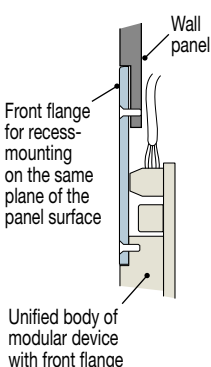
**fully aligned concealed** for recess-mounting without flange on the same plane of the door frame panel



### Assembly type

**2**

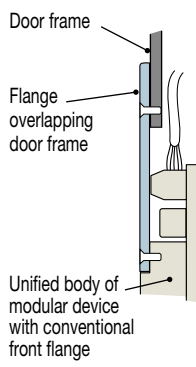
**fully aligned at milling** for recess-mounting with front flange on the same plane of the panel surface



### Assembly type

**3**

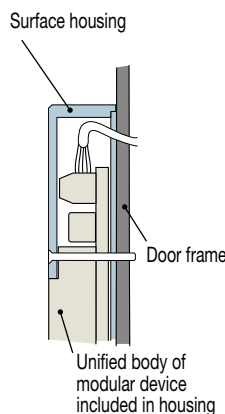
**for conventional flush mounting** with front flange overlapping door frame



### Assembly type

**4**

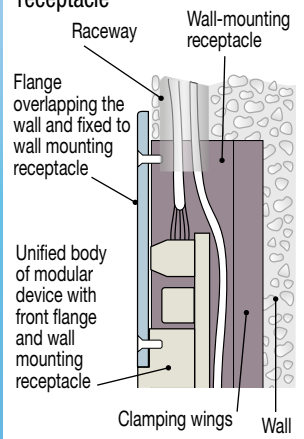
**for surface mounting** with using housing

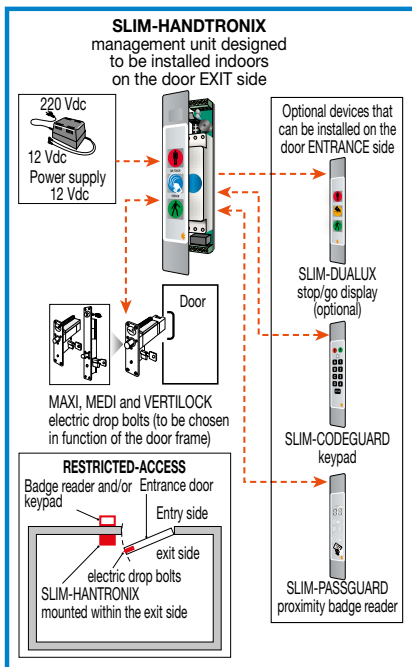


### Assembly type

**5**

**for recessed wall-mounting** with flange and wall-mounting receptacle





## SLIM-HANDTRONIX no touch TECNODIMENSIONE PROFESSIONAL "STAND ALONE" UNIT FOR AUTONOMOUS MANAGEMENT OF EACH DOOR

This unit is not simply "No-touch sensorized Stop/Go display" but actually micro stand-alone unit designed to fully control one single door equipped with electrical lock.

One unit for... **5** different needs...

- 1<sup>st</sup>** Timed unlocking command with automatic re-locking
- 2<sup>nd</sup>** Debounce logic
- 3<sup>rd</sup>** Tamper protection
- 4<sup>th</sup>** Optical and/or acoustic signals
- 5<sup>th</sup>** Temporary unlimited release



YOUR ENTRY INTO YOUR HOUSE OR APARTMENT BLOCK IS ALWAYS PROTECTED AND CONTROLLED.

**1<sup>st</sup>**

### TIMED OPENING WITH AUTOMATIC RE-CLOSURE (time required to authorise the door opening)

No more doors left open accidentally due to wrong movement or distraction! Control switch (with entryphone button, foyer door opening button, code keypad and/or badge, etc.) brings about release for a pre-set amount of time that can be adjusted as required (1-8-20-60 sec) enough to allow transit opening the door. Once the time has elapsed, the door is then locked, even if it has not been opened, and prevents any unauthorised entrance.

**2<sup>st</sup>**

### DEBOUNCE LOGIC

Finally, a gentle door closing mechanism! After the door has been opened by an authorised opening command, the electrical solenoid bolt stays back so that the door is does not slam back. The pin is also released by a special debounce logic to compensate for undesired bounce or oscillations. In this way, the classic "door closer with pump" can complete its route without any resistance to win and then close the door completely.

Lastly, thanks to the "courtesy service", for manual release of the door using the key (and/or internal handle) the solenoid bolt pin stays back temporarily for the programmed release time even with the key not inserted. This allows you to put away your key, push the door and pass through it even with your hands full (transit with parcels, bags, etc.).



**3<sup>rd</sup>**

### TAMPER PROTECTION

When in stand-by the door is locked, the unit supervises the door-proximity sensor against the tamper aiming to switch its own contacts. In other words, in stand-by condition, the locking of the bolt is not affected by interruption or alteration of the magnetic field of the reed sensor.

**4<sup>th</sup>**

### OPTICAL AND/OR ACOUSTIC ALARMS

These signals report if there is a problem with the door. The built-in buzzer activates and the lights of the Stop/Go display flash to signal the following conditions:

- If the door after an authorized transit stays open over a presetted time (time-out adjustable 30 sec).
- Every opening obtained unlikely through breaking effraction gives an automatic immediate alarm output. Really the opening of the door is permitted electrically using only authorized command arrived by badge readair for example.

**5<sup>th</sup>**

### TEMPORARY UNLIMITED RELEASE

This feature enables to permanently unlock the door for cleaning, moving and other purposes, or in the event of fire. It is possible to open the door an unlimited number of times without having to activate the command on the solenoid bolt for each passage.





# SLIM-HANDTRONIX no touch

## STAND ALONE UNIT FOR THE MANAGEMENT OF SINGLE DOORS

### Export Product-list

January 2024



**TECNODIMENSIONE**®

Ordering information



Q.ty

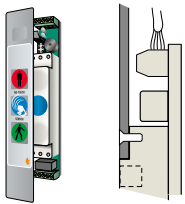
### Models for 12 Vdc power supply

MODELS

N°

#### Assembly type 1

fully aligned concealed for recess-mounting without flange on the same plane of the door frame panel \*



SLIM-HANDTRONIX stand alone unit type 1 with fully aligned concealed for recess-mounting on the same plane of the door frame panel without flange.

Ideal to achieve a "smooth" surface (without roughness) that is easy to clean.

Supplied with diffuser screen and gap G for sections with a thickness of 1.6 mm.

Fitted (instead of the manual push button) with an infrared sensor that "sees" a presence up to 10 cm away. Basically, the "contactless" door opening and/or doorbell command is automatically triggered by bringing the hand close to the unit, without actually touching it. Complete with self-adhesive cover designed to be applied after the final installation of the system.

**\* In this case it is advisable to prepare the recess during the door frame machining.**

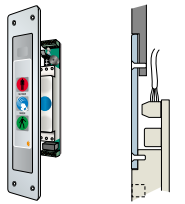
034991HM

Same with front panel and gap G for sections with a thickness of 3 mm

034991HM3

#### Assembly type 2

fully aligned at milling for recess-mounting with front flange on the same plane of the panel surface ◆



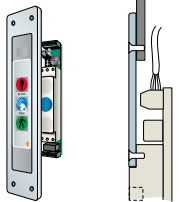
SLIM-HANDTRONIX stand alone unit type 2 for aligned recessed flush fitting in bottom of panel using front flange (e.g. To mount on wall panel next to the door frame on the post where no chasing can be carried out). Fitted (instead of the manual push button) with an infrared sensor that "sees" a presence up to 10 cm away. Basically, the "contactless" door opening and/or doorbell command is automatically triggered by bringing the hand close to the unit, without actually touching it. Supplied with front flange in anodized aluminium with "silver" finish - 250 x 50 mm, thickness 2.5 mm for recess-mounting on the same plane of the panel surface for aligned recessed flush fitting in bottom of plane using front flange. Cover pre-assembled and fixed into the flange niche.

**◆ In this case, it is advisable to prepare sunk milling during the panel machining phase.**

034992HM

#### Assembly type 3

for conventional flush mounting with front flange overlapping door frame



SLIM-HANDTRONIX stand alone unit, type 3 for traditional recessed fitting using flange.

Supplied with front flange in anodized aluminium with "silver" finish - 250 x 50mm, thickness 4 mm for flush mounting.

Fitted (instead of the manual push button) with an infrared sensor that "sees" a presence up to 10 cm away.

Basically, the "contactless" door opening and/or doorbell command is automatically triggered by bringing the hand close to the unit, without actually touching it.

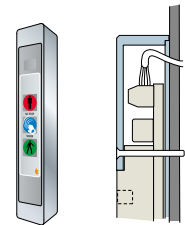
Cover pre-assembled and fixed into the flange niche.

**Mounting can be carried out "on site", directly onto the installed door frame.**

034993HM

#### Assembly type 4

for surface mounting with using housing



SLIM-HANDTRONIX stand alone unit type 4 for mounting placed on surface using housing.

With extra-strong protective housing, made in anodized silver finish aluminium (35 x 25 x 215 mm).

Fitted (instead of the manual push button) with an infrared sensor that "sees" a presence up to 10 cm away.

Basically, the "contactless" door opening and/or doorbell command is automatically triggered by bringing the hand close to the unit, without actually touching it.

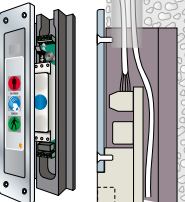
Self-adhesive cover in polycarbonate, provided separately and designed to be used as final cover to hide the 4 fixing screws of the housing on the door frame.

**Useful when you wish to avoid recess-mounting or cuts on the door frame.**

034994HM

#### Assembly type 5

for recessed wall-mounting with flange and wall-mounting receptacle



SLIM-HANDTRONIX stand alone unit type 5 for recessed assembly using flange and wall box. Supplied with front flange in anodized aluminium with "silver" finish - 250 x 50 mm, thickness 4 mm, to be fixed to the housing by placing on wall surface.

Self-adhesive cover in polycarbonate pre-assembled and fixed into the flange niche.

Fitted (instead of the manual push button) with an infrared sensor that "sees" a presence up to 10 cm away.

Basically, the "contactless" door opening and/or doorbell command is automatically triggered by bringing the hand close to the unit, without actually touching it.

Also fitted with wall box with "wings" for rapid anchoring (65 x 30 x 230 mm), in plastic taken from single block to be assembled "in a niche" in the wall to house the body of the standalone unit.

**Wall niche and cable channel to be prepared beforehand.**

034995HM

**Special configurations available at extra charge:** Cover with your logo and/or customized.

*For sizes, measurements and details of chasing, application examples and connection diagrams, see page 94*

